



ELCN
European Private Land
Conservation Network



Elinkeino-, liikenne- ja
ympäristökeskus



Eurosites



International Workshop: Legal Tools for Private Land Conservation

14 and 15 June 2018 | Arktikum, Rovaniemi, Finland



Elinkeino-, liikenne- ja ympäristökeskus
Närings-, trafik- och miljöcentralen
Centre for Economic Development, Transport and the Environment

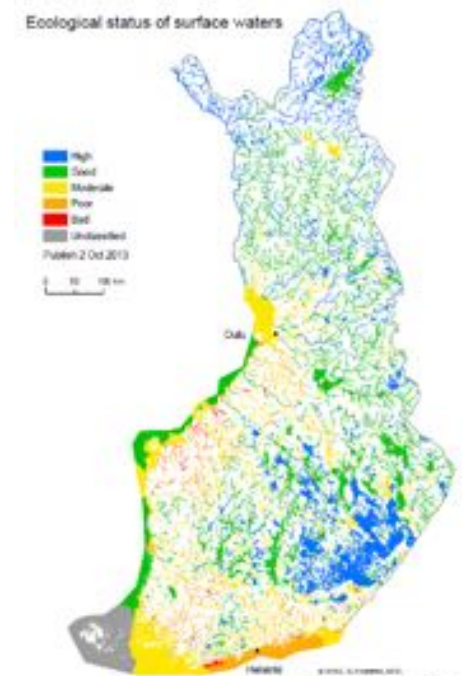
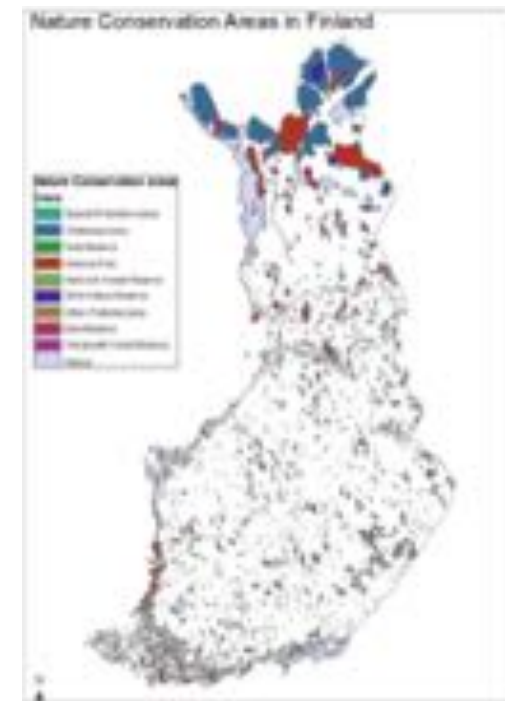
Lapland and ELY Centre





Lapland

- 180 000 inhabitants / 190 000 reindeers
- Lapland has a rare combination of sparsely populated areas with a variety of urban centres
- Economic activity in the fields of tourism, mining, forestry and reindeer husbandry
- The Sámi culture (10 000 Sámi people)
- The polar night, midnight sun, northern lights
- Lapland has been proven to have the purest air in Europe
- Network of nature reserves with more than 3.3 million hectares
- Santa Claus





Rovaniemi

- The population of Rovaniemi is over 62 000 (2016)
- The vast majority (84 percent) of the population are employed by service sector (2015)
- Rovaniemi is the educational centre of Lapland and there are two universities located in Rovaniemi.
 - The University of Lapland is the northernmost university in Finland and in the European Union. Lapland University for Applied Sciences has its home base in Rovaniemi.
- Tourism has grown strongly in Rovaniemi region since the nineties. Approximately 500 000 tourists visit Rovaniemi each year.
- The unique location of Rovaniemi on the Arctic Circle has attracted visitors from all over the world and almost 60 percent of the visitors come from abroad.





Centre for Economic Development, Transport and the Environment

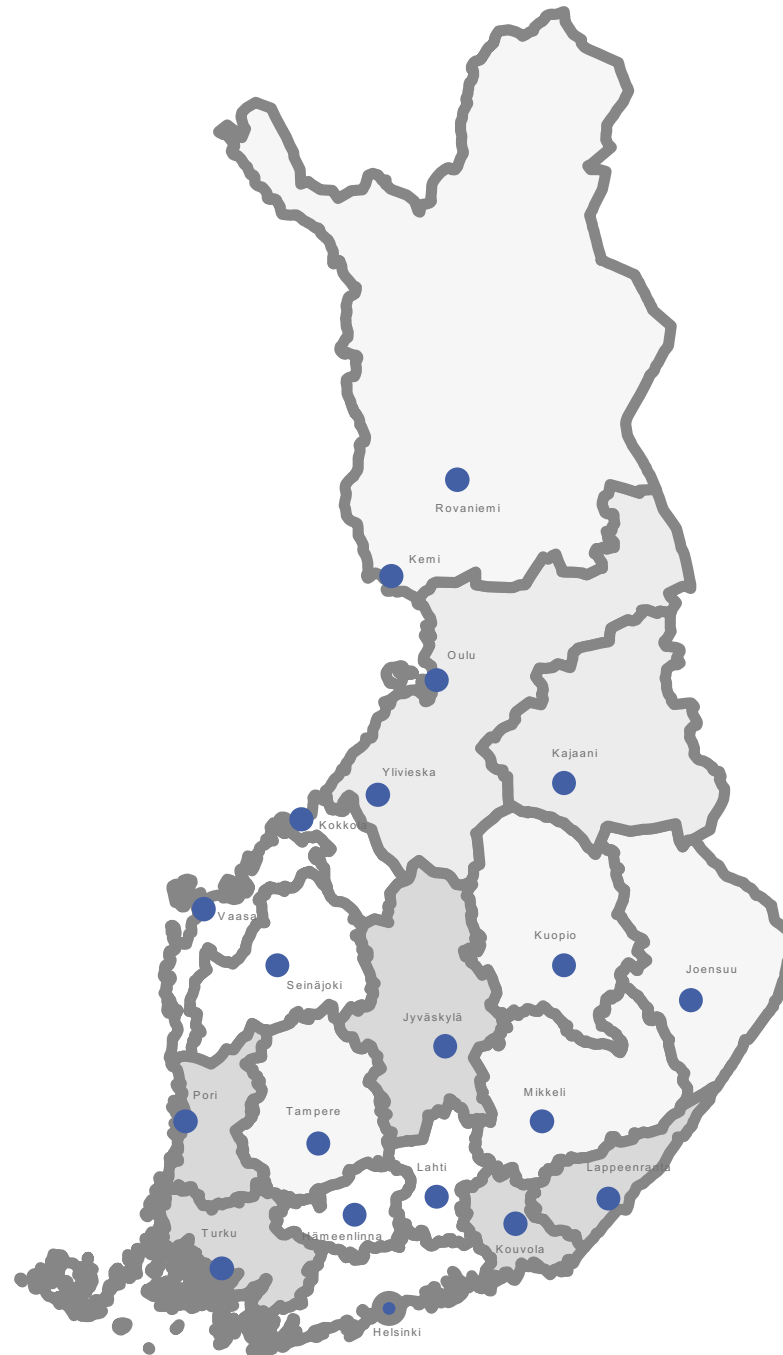
- The Centres for Economic Development, Transport and the Environment (ELY Centres) are responsible for the regional implementation and development tasks of the central government
- Three ELY Centre responsibility areas
 - Business and industry, the labour force, competence and skills
 - Transport and infrastructure
 - Environment and natural resources





ELY Centres and offices

- **Lapland:** Rovaniemi, Kemi
- **Kainuu:** Kajaani
- **North Ostrobothnia:** Oulu, Ylivieska
- **Ostrobothnia:** Vaasa, Kokkola
- **South Ostrobothnia:** Seinäjoki, Vaasa, Kokkola
- **Central Finland:** Jyväskylä
- **North Savo:** Kuopio
- **North Karelia:** Joensuu
- **South Savo:** Mikkeli
- **Pirkanmaa:** Tampere
- **Satakunta:** Pori
- **Southwest Finland:** Turku, Pori
- **Southeast Finland:** Kouvola, Lappeenranta
- **Häme:** Lahti, Hämeenlinna
- **Uusimaa:** Helsinki





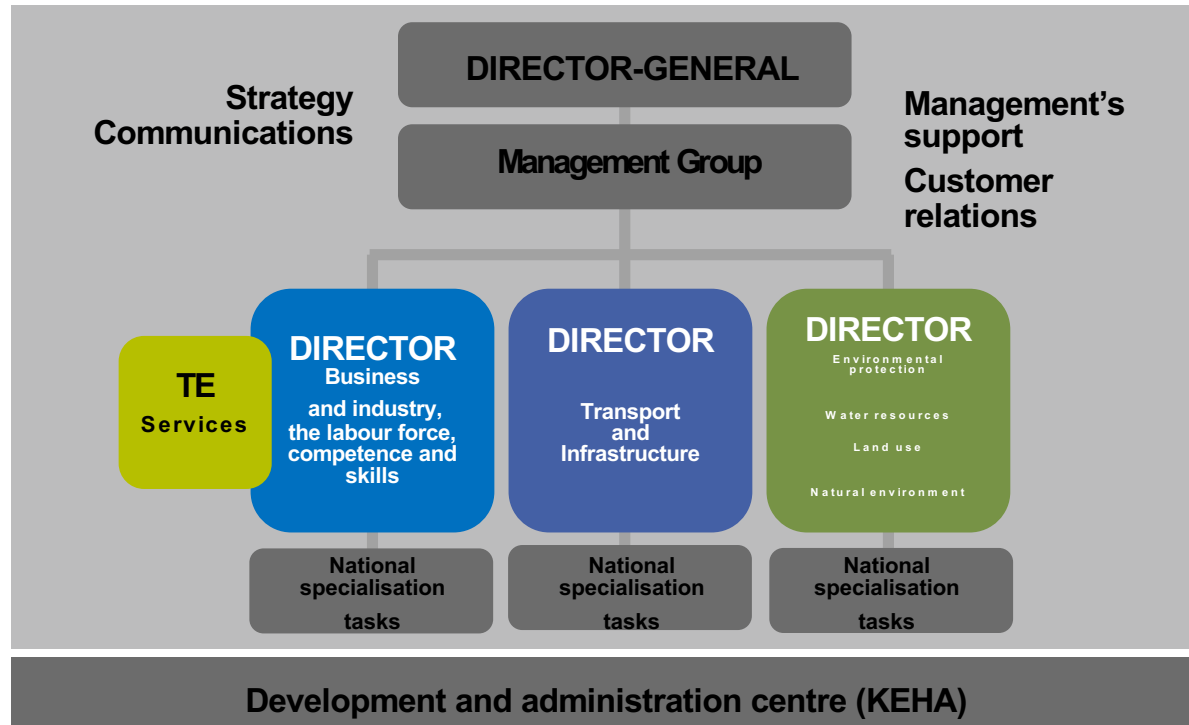
Steering of ELY Centres

- General administrative steering: Ministry of Employment and the Economy

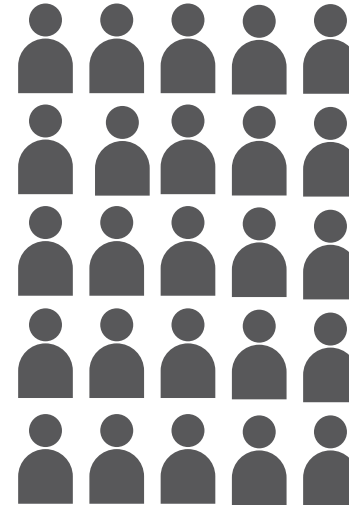
- Steering the Centres in their own administrative field:
 - Ministry of Employment and the Economy
 - Ministry of Transport and Communications/Finnish Transport Agency
 - **Ministry of the Environment**
 - Ministry of Education and Culture
 - Ministry of the Interior
 - **Ministry of Agriculture and Forestry**
 - Finnish Food Safety Authority Evira
 - Agency for Rural Affairs
 - TEKES – the Finnish Funding Agency for Technology and Innovation



Lapland ELY Centre organisation



Customers & interest groups





International cooperation in Lapland ELY Centre

- International participation is an essential part of the Centre's work. Lapland borders on three countries: Sweden (617 km), Norway (715 km) and Russia (370 km).
- Lapland is the northernmost area in the European Union and the only Finnish province lying within the Arctic zone.
- Transboundary water co-operation
- The North Calotte Council
- Barents co-operation
- Arctic co-operation
- Several working groups between authorities
- International projects

